

# Test our new Motor Control Platform now!

Valid until 2020-12-31

## Starter-Set\* includes

- ✓ BGE 5510 dPro CO/ IO, PN or EC
- ✓ Connection cable
- ✓ Starter Kit (USB adapter with connection cable, adapter with service interface)
- ✓ Motor optionally from BG 32 to BG 65S
- ✓ Software Drive Assistant 5 for download
- ✓ Incremental encoder included
- ✓ Optionally with planetary gearbox (PLG)

## Product Information BGE 5510 dPro

- » Compact 4-quadrant controller for control of brushless and brushed DC motors
- » For drives from the Dunkermotoren portfolio up to 250 W continuous power
- » Standard with 2 x RJ45 plug and terminal connection for the bus interface
- » Connection possibility for additional encoder and brake
- » Bus interface CANopen (CO), Profinet (PN) or EtherCAT (EC)

**BGE 5510 dPro**



**CANopen** Ether**CAT**

**PROFINET**  
INDUSTRIAL ETHERNET

## Starter-Set 1 | < 80 W

### BG 42 dCore | 60 W

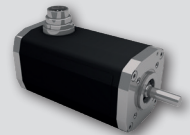
- » BG 42x30 dCore, 12 oder 24 V
- » RE 30-3-500
- » Optional PLG 42 S or PLG 52



## Starter-Set 2 | > 80 W

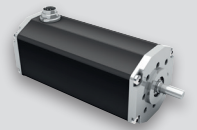
### BG 45 | 80 W

- » BG 45x30, 12 or 24 V
- » RE 30-3-500
- » Optional PLG 42 S or PLG 52



### BG 66 dCore | 140/ 200 W

- » BG 66x25 dCore, 24 or 40 V
- » BG 66x50 dCore, 24 or 40 V
- » MR encoder integrated
- » Optional PLG 63 EP



**CO/ IO only 249,- €**  
**PN or EC only 349,- €**

Optional with PLG 1-/ 2-  
or 3-stage add. 50,- €



**CO/ IO only 299,- €**  
**PN or EC only 399,- €**

Optional with PLG 1-/ 2-  
or 3-stage add. 100,- €



Get to know all functions in their full scope, test possible applications for your projects and let the intuitive and simple installation, connectivity and application convince you.

**Learn more from our experts!**

\* A maximum of three Starter-Sets/ customer can be ordered.

# Test our new Motor Control Platform now!

Valid until 12-31-2020

## Starter-Set\* includes

- ✓ BGE 5510 *dPro* CO/ IO, PN or EC
- ✓ Connection cable
- ✓ Starter Kit (USB adapter with connection cable, adapter with service interface)
- ✓ Motor optionally from BG 32 to BG 65S
- ✓ Software Drive Assistant 5 for download
- ✓ Incremental encoder included
- ✓ Optionally with planetary gearbox (PLG)

## Product Information BGE 5510 *dPro*

- » Compact 4-quadrant controller for control of brushless and brushed DC motors
- » For drives from the Dunkermotoren portfolio up to 250 W continuous power
- » Standard with 2 x RJ45 plug and terminal connection for the bus interface
- » Connection possibility for additional encoder and brake
- » Bus interface CANopen (CO), Profinet (PN) or EtherCAT (EC)

**BGE 5510 *dPro***



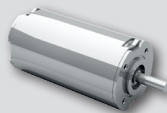
**CANopen** Ether**CAT**

**PROFINET**  
INDUSTRIAL ETHERNET

## Starter-Set 1 | < 80 W

### **BG 42 *dCore* | 60 W**

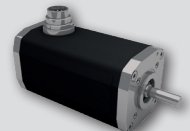
- » BG 42x30 *dCore*, 12 oder 24 V
- » RE 30-3-500
- » Optional PLG 42 S or PLG 52



## Starter-Set 2 | > 80 W

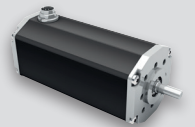
### **BG 45 | 80 W**

- » BG 45x30, 12 or 24 V
- » RE 30-3-500
- » Optional PLG 42 S or PLG 52



### **BG 66 *dCore* | 140/ 200 W**

- » BG 66x25 *dCore*, 24 or 40 V
- » BG 66x50 *dCore*, 24 or 40 V
- » MR encoder integrated
- » Optional PLG 63 EP



**CO/ IO only 289,- USD**  
**PN or EC only 399,- USD**

Optional with PLG 1-/ 2-  
or 3-stage add. 57,- USD



**CO/ IO only 349,- USD**  
**PN or EC only 459,- USD**

Optional with PLG 1-/ 2-  
or 3-stage add. 115,- USD



Get to know all functions in their full scope, test possible applications for your projects and let the intuitive and simple installation, connectivity and application convince you.

**Learn more from our experts!**

\* A maximum of three Starter-Sets/ customer can be ordered.